

MSKTD & Associates

Architecture | Engineering | Interior Design

1715 Magnavox Way Fort Wayne, IN 46804 260.432.8337

930 North Meridian Indianapolis, IN 46204 317.917.1190

www.msktd.com



Sealant Schedule

BASED ON 'SIKA' ... PROVEN EQUAL PRODUCTS MAY BE CONSIDERED. COLOR TO BE CHOSEN BY ARCHITECT FROM FULL RANGE OF STANDARD COLORS

	SIKA SMA	SIKA SMALEX 1A	SIKA SMALEX 20 NEZ	SIKA SMALEX PLUS	PERI ROOF MANUFACTURER	SIKA SMAPLASTIC 15.M	SIKA SMA DOPLEX NSL	SIKA SMALEX SUM USA-APPROVED
CONCRETE	●	●	●	●	●	●	●	●
MASONRY	●	●	●	●	●	●	●	●
ALUMINUM	●	●	●	●	●	●	●	●
WOOD	●	●	●	●	●	●	●	●
EIFS	●	●	●	●	●	●	●	●
GLASS	●	●	●	●	●	●	●	●
TILE	●	●	●	●	●	●	●	●
FIBERGLASS	●	●	●	●	●	●	●	●
PLASTIC LAMINATE	●	●	●	●	●	●	●	●
PORCELAIN	●	●	●	●	●	●	●	●
(HIGH MOVEMENT)	●	●	●	●	●	●	●	●
(KITCHEN/BATH)	●	●	●	●	●	●	●	●
(EXISTING ROOF)	●	●	●	●	●	●	●	●
(INTERIOR CAULKING)	●	●	●	●	●	●	●	●
(DUCTWORK)	●	●	●	●	●	●	●	●
(WALL CRACKS)	●	●	●	●	●	●	●	●
(WINDOW/DOOR)	●	●	●	●	●	●	●	●
(CONC. FLOOR/PAVING)	●	●	●	●	●	●	●	●
(PROCESS AREA)	●	●	●	●	●	●	●	●

Specific Plan Notes

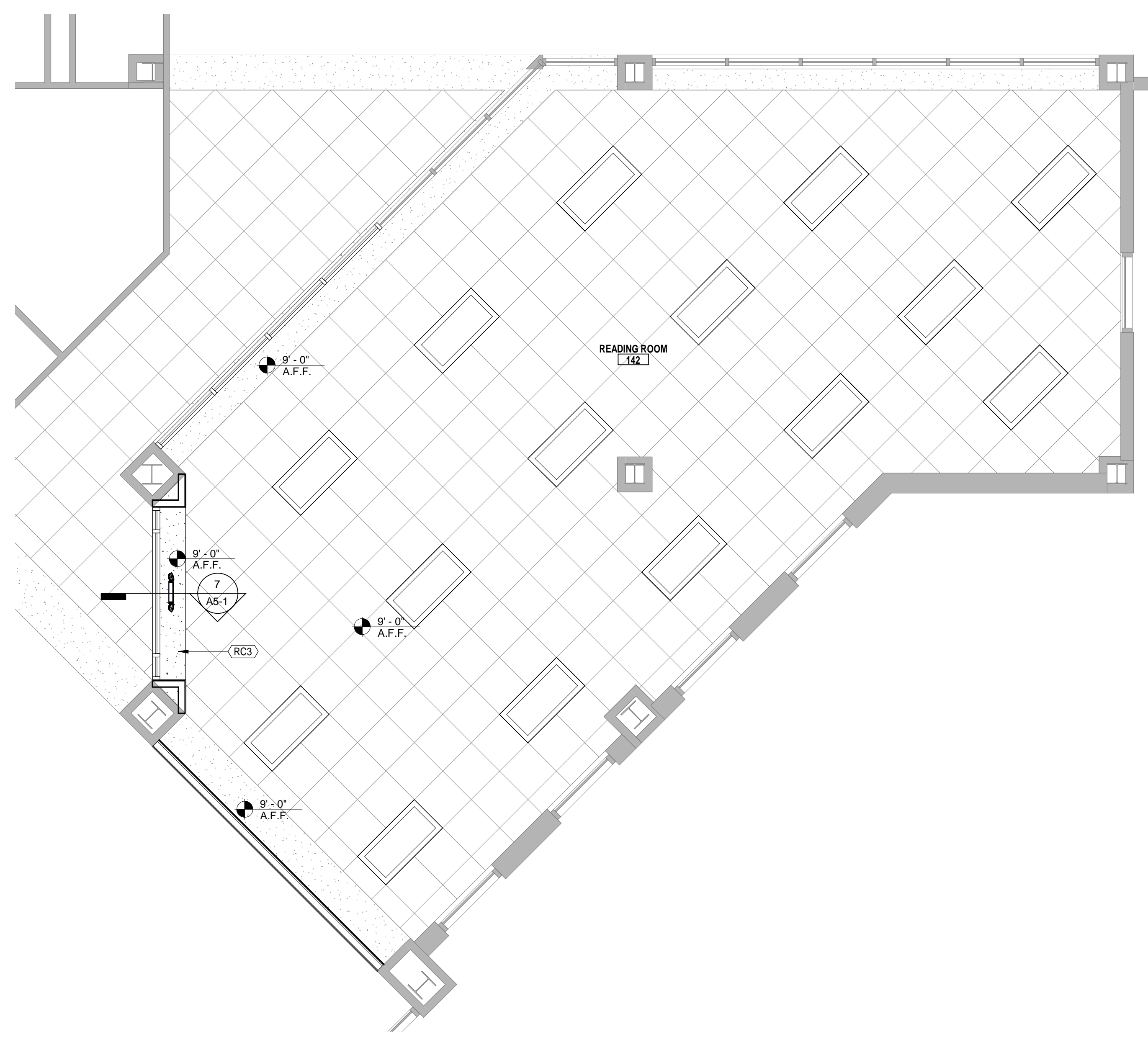
- A1 (13) EXISTING 1x1' DOUBLE STACKED LOCKERS TO BE REINSTALLED BY CONTRACTOR ALONG NEW STUD WALL. INSTALL BLOCKING FOR ATTACHING LOCKERS TO.
- A2 WALL TO GO UP TO UNDERSIDE OF DUCTWORK. CONTRACTOR TO VERIFY
- A3 WALL TO ALIGN WITH EXISTING CEILING GRID. CONTRACTOR TO VERIFY
- A4 OWNER TO PROVIDE AND INSTALL STORAGE SHELVING

Specific Reflected Ceiling Plan Notes

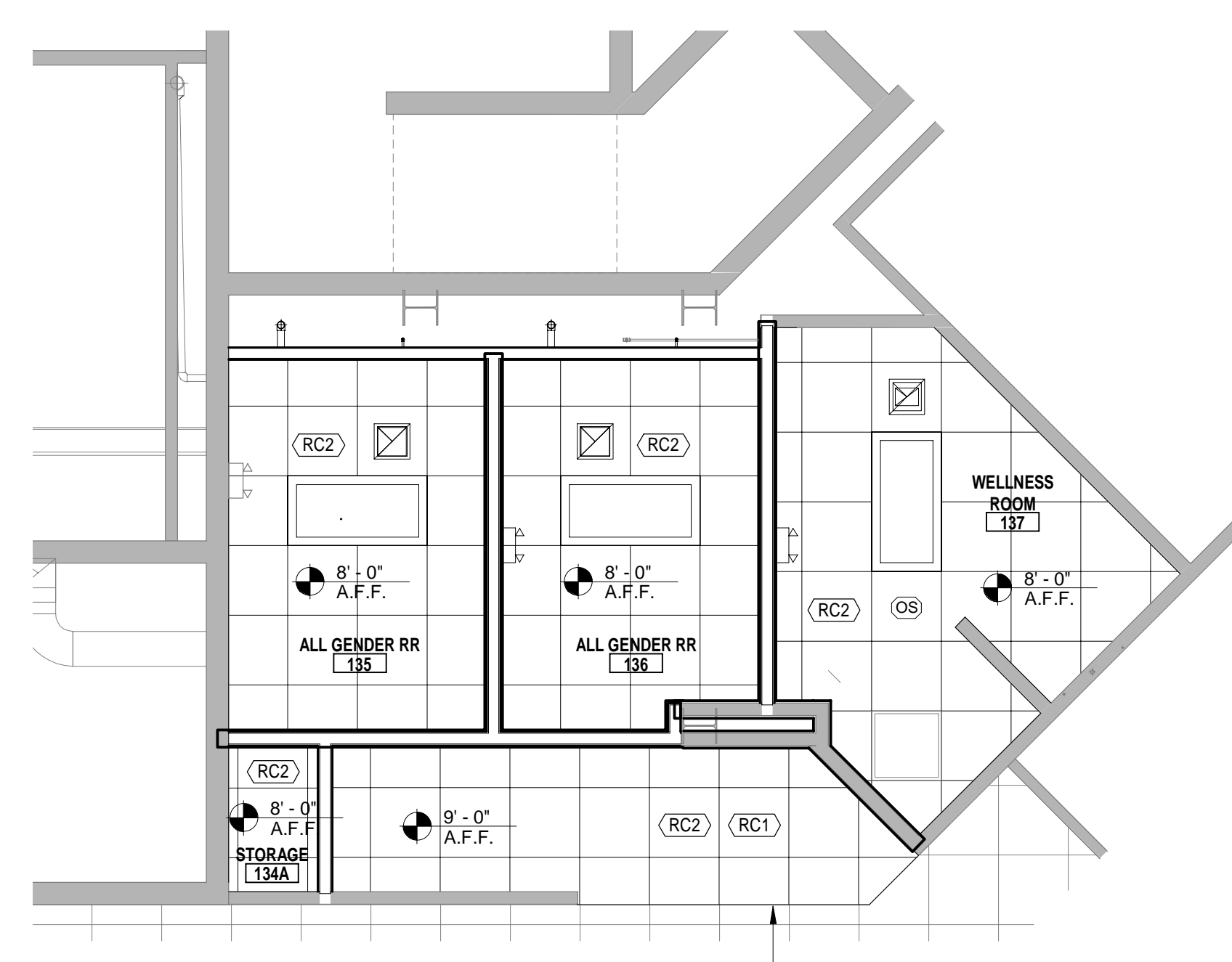
- RC1 ALIGN NEW CEILING WITH EXISTING GRID. CONTRACTOR TO VERIFY CEILING HEIGHT
- RC2 NEW CEILING AND GRID - SEE FINISH PLAN
- RC3 NEW GYPSUM BOARD CEILING, PAINT.
- RC4 MODIFY EXISTING CEILING AS REQUIRED TO INSTALL NEW WALL.
- RC5 TIE NEW CEILING INTO EXISTING CEILING. CUT AND DEMO EXISTING AS REQUIRED FOR ALIGNMENT.

Toilet Accessories Schedule

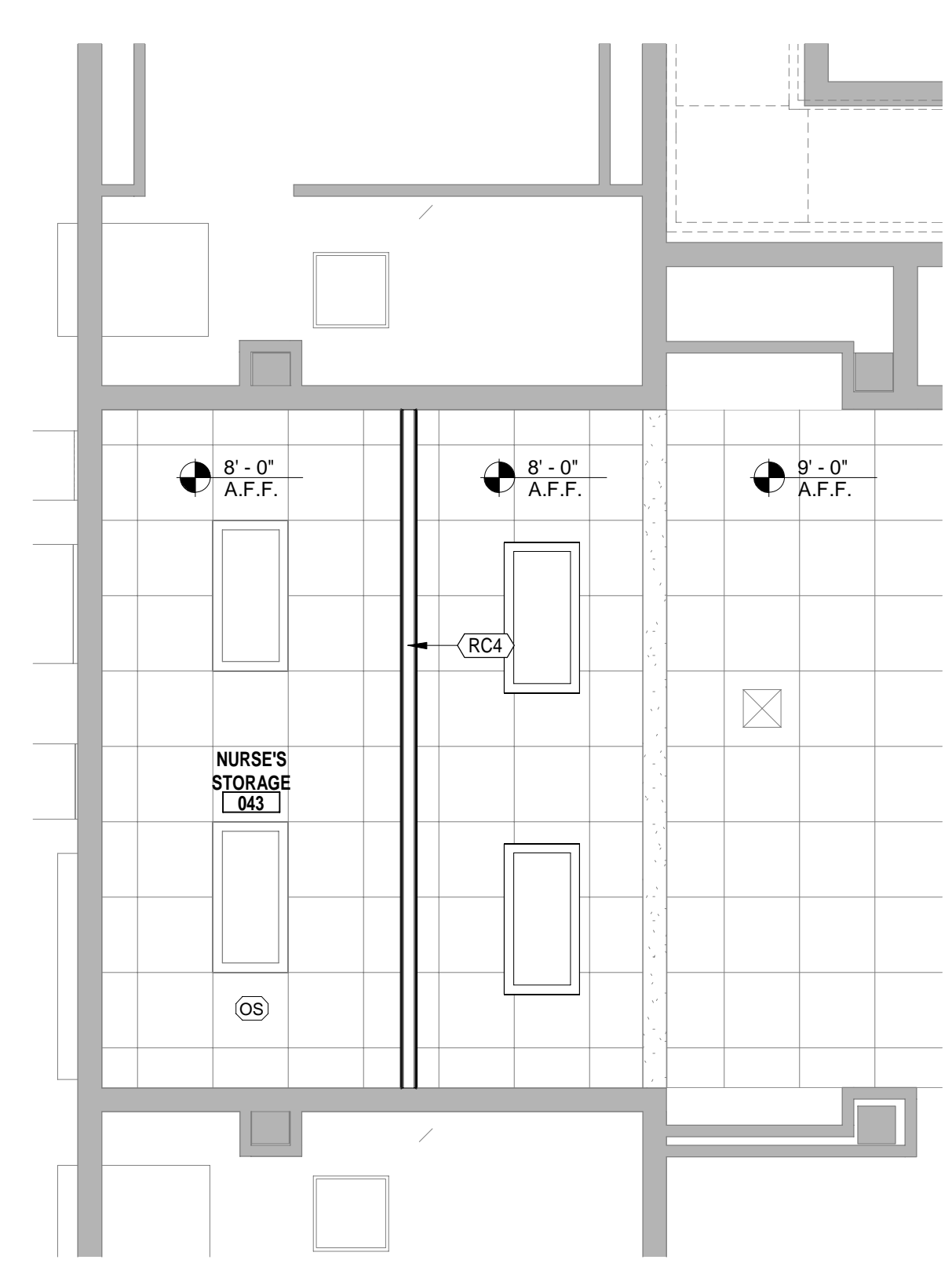
ITEM	ACCESSORY DESCRIPTION	MANUFACTURER'S NUMBERS	REMARKS
1	18" x 24" MIRROR	B-185-2431 SURFACE MOUNTED	
2	SOAP DISPENSER	BY OWNER. INSTALLED BY GC	CONTRACTOR TO PROVIDE BLOCKING BEHIND UNIT
3	PAPER TOWEL DISPENSER	BY OWNER. INSTALLED BY GC	CONTRACTOR TO PROVIDE BLOCKING BEHIND UNIT
4	BABY CHANGING STATION	KOALA KARE KB200	CONTRACTOR TO PROVIDE BLOCKING BEHIND UNIT
5	TOILET TISSUE DISPENSER	BY OWNER. INSTALLED BY GC	CONTRACTOR TO PROVIDE BLOCKING BEHIND UNIT
6	18" VERTICAL GRAB BAR	B6806 X 18 SURFACE MOUNTED	CONTRACTOR TO PROVIDE BLOCKING BEHIND UNIT
7	42" GRAB BAR	B-6908 X 42 SURFACE MOUNTED	CONTRACTOR TO PROVIDE BLOCKING BEHIND UNIT
8	36" GRAB BAR	B6806 X 36 SURFACE MOUNTED	CONTRACTOR TO PROVIDE BLOCKING BEHIND UNIT
9	SANITARY NAPKIN DISPENSER	B-254 SURFACE MOUNTED	CONTRACTOR TO PROVIDE BLOCKING BEHIND UNIT
10	WASTE RECEPTACLE	BY OWNER	



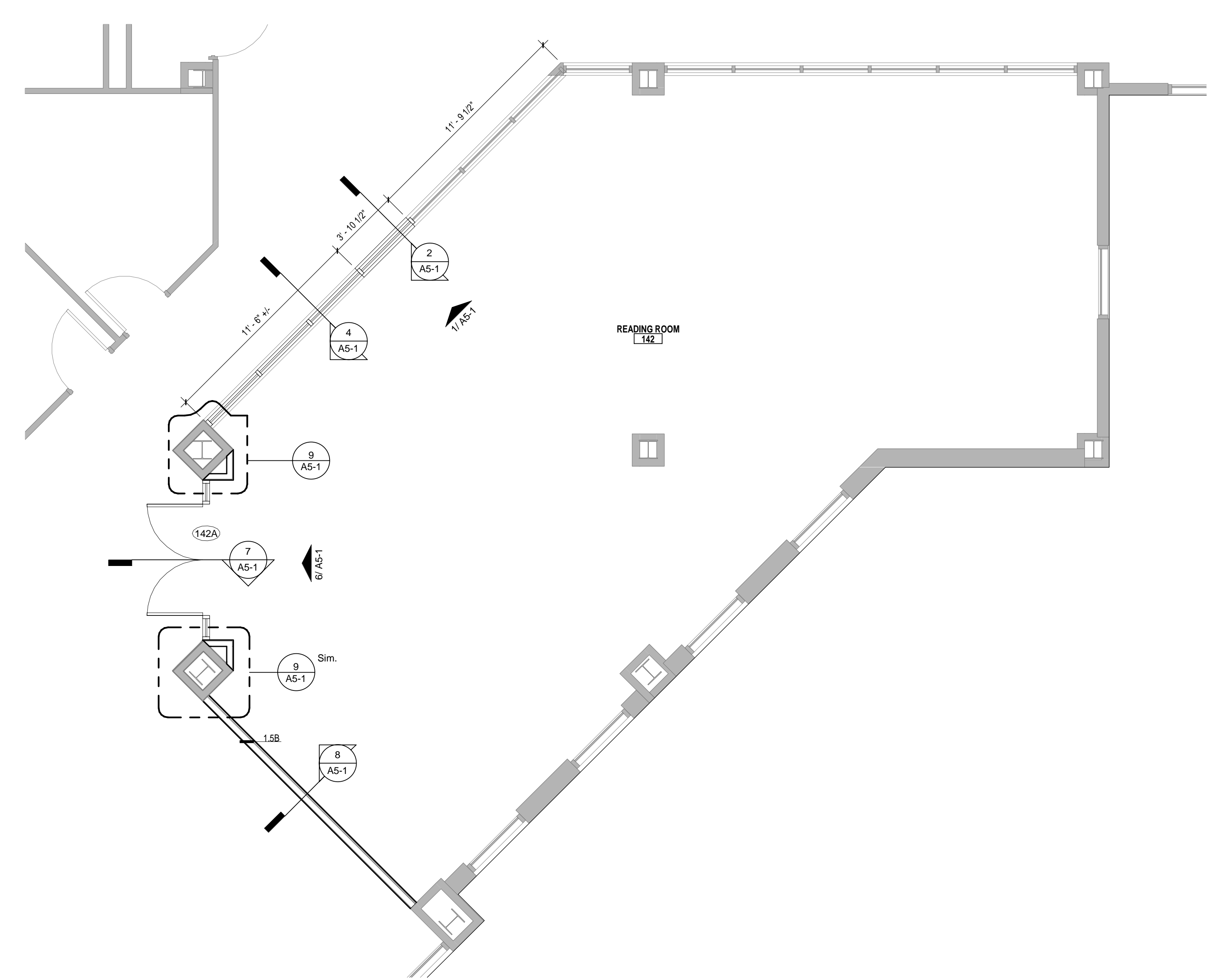
6 Reading Room RCP
1/4" = 1'-0"



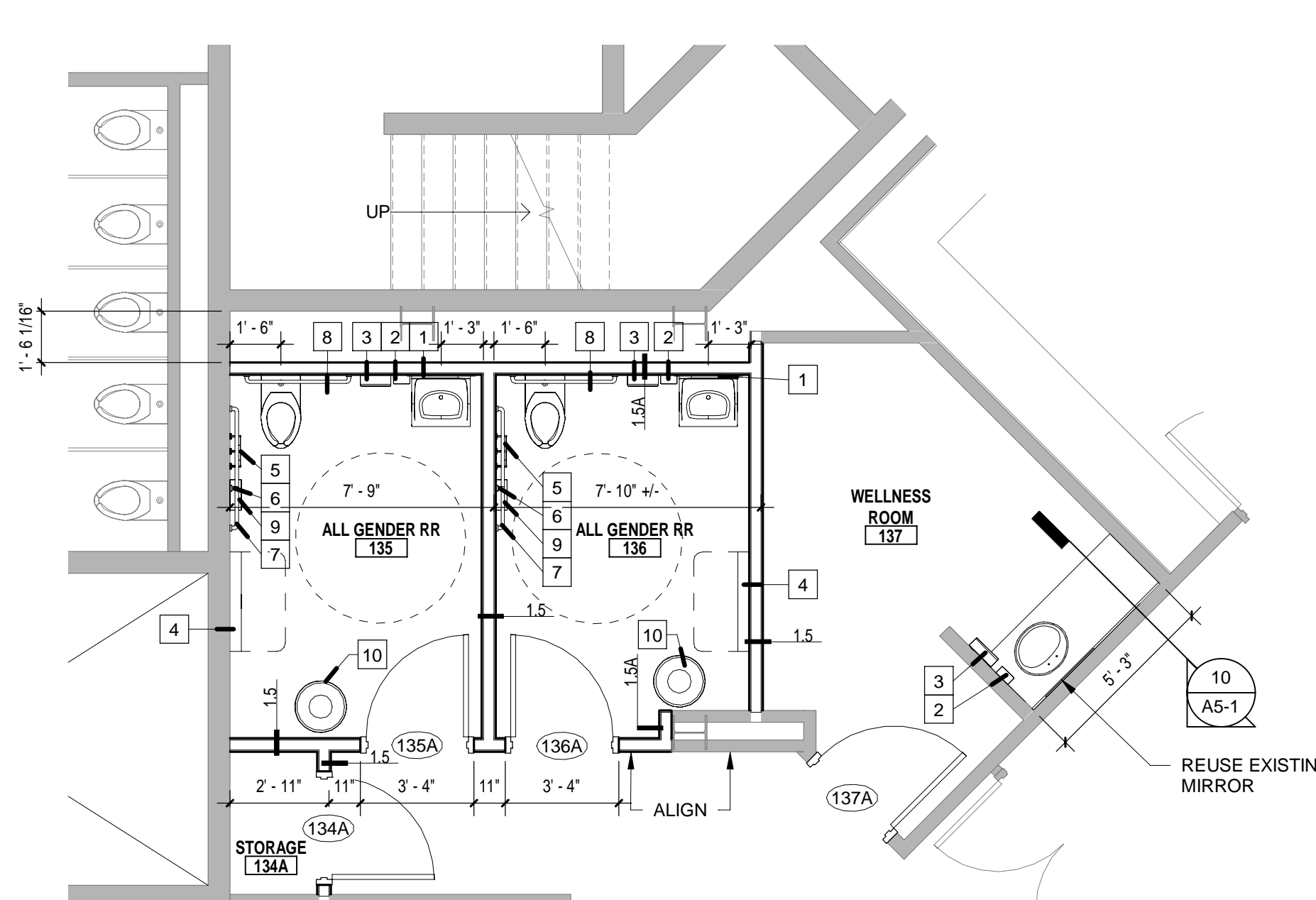
4 Wellness Area RCP
1/4" = 1'-0"



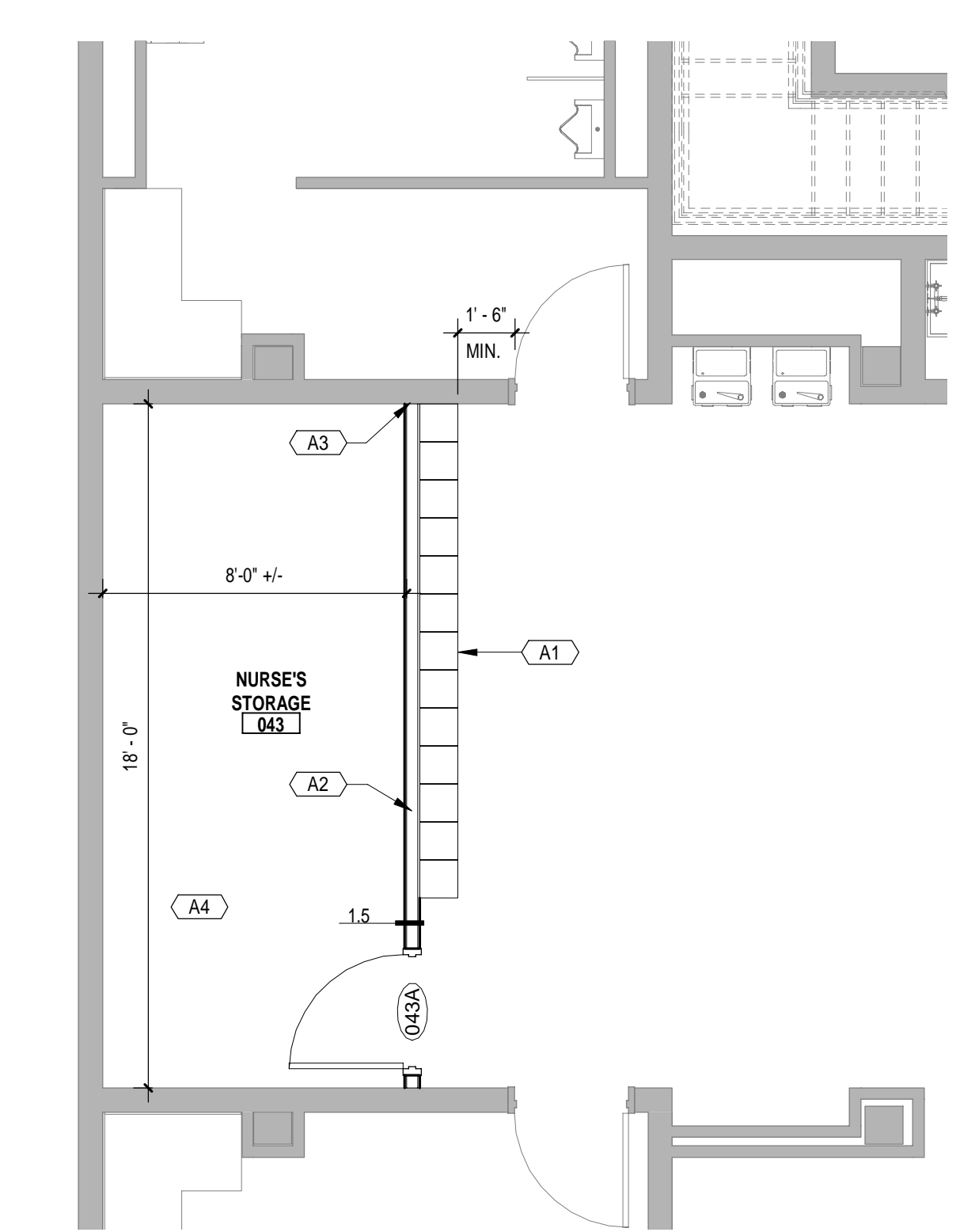
2 Nurse Storage RCP
1/4" = 1'-0"



5 Reading Room Plan
1/4" = 1'-0"



3 Wellness Area Plan
1/4" = 1'-0"



1 Nurse Storage Plan
1/4" = 1'-0"

A Project for:
Indiana University East
Brice E. Hayes Hall
Renovations to Rooms 099, 135, 137, & 140
IU Project Number: 20170750

PROJECT NO. 7327	DATE 10-05-18
REV.	DATE

SET DESCRIPTION
Construction Set

SHEET TITLE
Floor Plans

SHEET NUMBER

A2-1